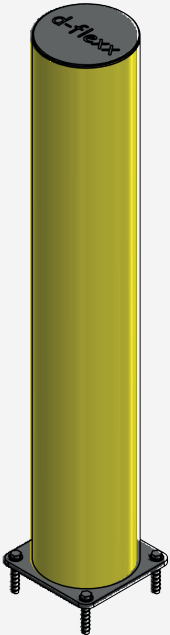


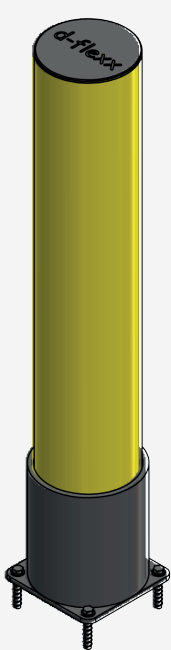


# Bollards - BRAVO

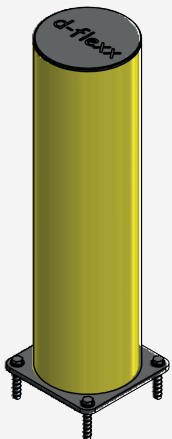
DFBO50-10



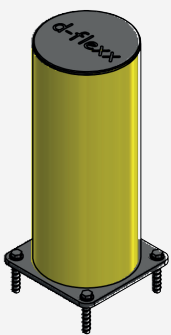
DFBO50-30



DFBO50-20



DFBO50-40



# Table of contents

Art. No.	Description	Height	Weight	Page
DFBO50-10	Bollard	1200 mm	19,289 kg	3
DFBO50-20	Bollard	750 mm	15,963 kg	3
DFBO50-30	Bollard with moveable cuff	1200 mm	20,777 kg	4
DFBO50-40	Bollard	500 mm	12,387 kg	4

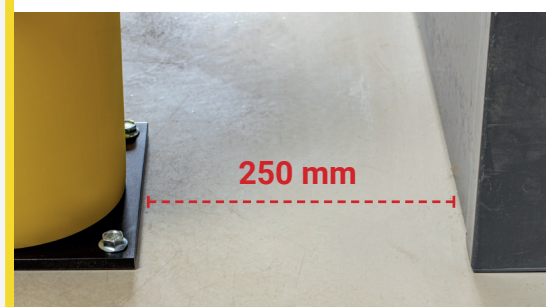
## Technical Information

### Material properties

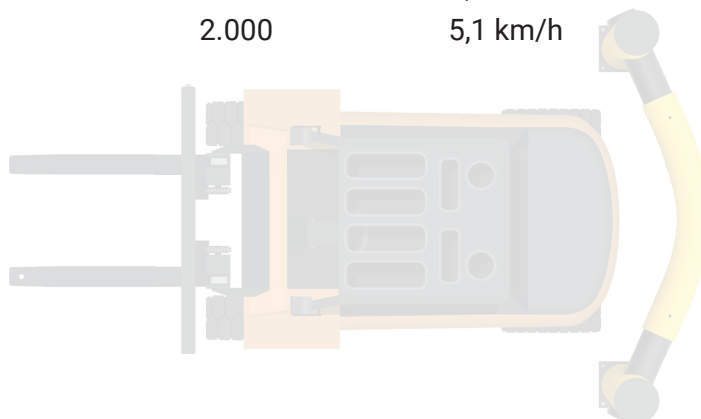
Operational temperature range	-40° up to + 50°
Ignition Temperature	350 - 360°C
Flash Point	350 - 360°C
Toxicity	Nontoxic
Chemical Resistance	high - ISO/TR 10358
Hygiene Seals	Non
Standard Warranty	5 years

Deflection Zone:

**I** 250 mm

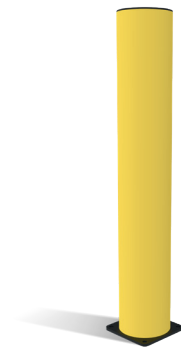
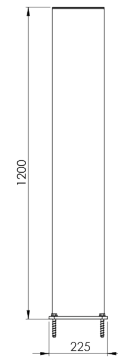


Impact Test	Tested to withstand force of (Joule)	Vehicle weight equivalent (kg)	Vehicle equivalent speed (km/h)	Equivalent angle of impact	Deflection zone
DFBO50-10	4.000	2.000	5,1 km/h	90°	250 mm
DFBO50-20	4.000	2.000	5,1 km/h	90°	250 mm
DFBO50-30	4.000	2.000	5,1 km/h	90°	250 mm
DFBO50-40	4.000	2.000	5,1 km/h	90°	250 mm



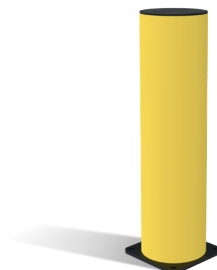
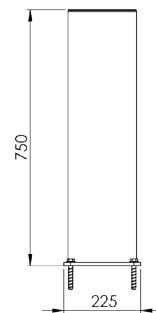
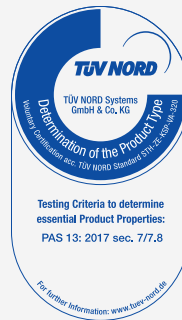
# DFBO50-10

Article description	Bollard 1200 mm
Item number	DFBO50-10
EAN	4250912311336
Customs tariff number	39269097
Width (mm)	225
Height (mm)	1200
Depth/Length (mm)	225
Installation width (mm)	250
Width without foot plate (mm):	200
Depth without foot plate (mm):	200
Deflection zone (mm)	250
Tested to withstand force (Joule):	4.000 J
Net weight	19,289 kg
Material	Polyethylene
Color	Yellow RAL 1018 - black
Area of application	Indoor and outdoor use
Fixing	Fixing Material included. 4 x concrete screw M12x80



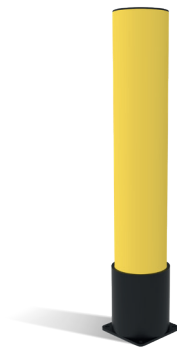
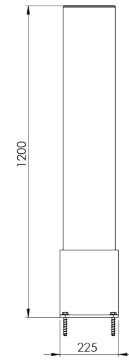
# DFBO50-20

Article description	Bollard 750 mm
Item number	DFBO50-20
EAN	4250912311329
Customs tariff number	39269097
Width (mm)	225
Height (mm)	750
Depth/Length (mm)	225
Installation width (mm)	250
Width without foot plate (mm):	200
Depth without foot plate (mm):	200
Deflection zone (mm)	250
Tested to withstand force (Joule):	4.000 J
Net weight	15,963 kg
Material	Polyethylene
Color	Yellow RAL 1018 - black
Area of application	Indoor and outdoor use
Fixing	Fixing Material included. 4 x concrete screw M12x80



# DFBO50-30

Article description	Bollard with moveable cuff
Item number	DFBO50-30
EAN	4250912311343
Customs tariff number	39269097
Width (mm)	225
Height (mm)	1200
Depth/Length (mm)	225
Installation width (mm)	250
Width without foot plate (mm):	200
Depth without foot plate (mm):	200
Deflection zone (mm)	250
Tested to withstand force (Joule):	4.000 J
Net weight	20,777 kg
Material	Polyethylene
Color	Yellow RAL 1018 - black
Area of application	Indoor and outdoor use
Fixing	Fixing Material included. 4 x concrete screw M12x80



# DFBO50-40

Article description	Bollard 500 mm
Item number	DFBO50-40
EAN	4250912311312
Customs tariff number	39269097
Width (mm)	225
Height (mm)	500
Depth/Length (mm)	225
Installation width (mm)	250
Width without foot plate (mm):	200
Depth without foot plate (mm):	200
Deflection zone (mm)	250
Tested to withstand force (Joule):	4.000 J
Net weight	12,387 kg
Material	Polyethylene
Color	Yellow RAL 1018 - black
Area of application	Indoor and outdoor use
Fixing	Fixing Material included. 4 x concrete screw M12x80

